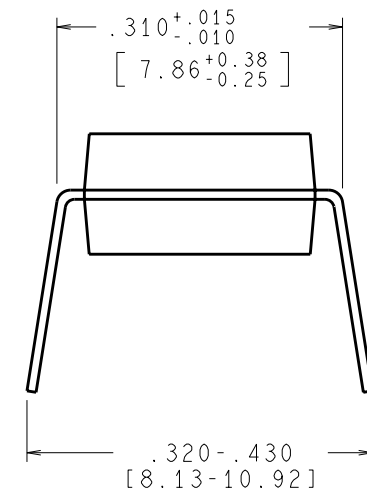
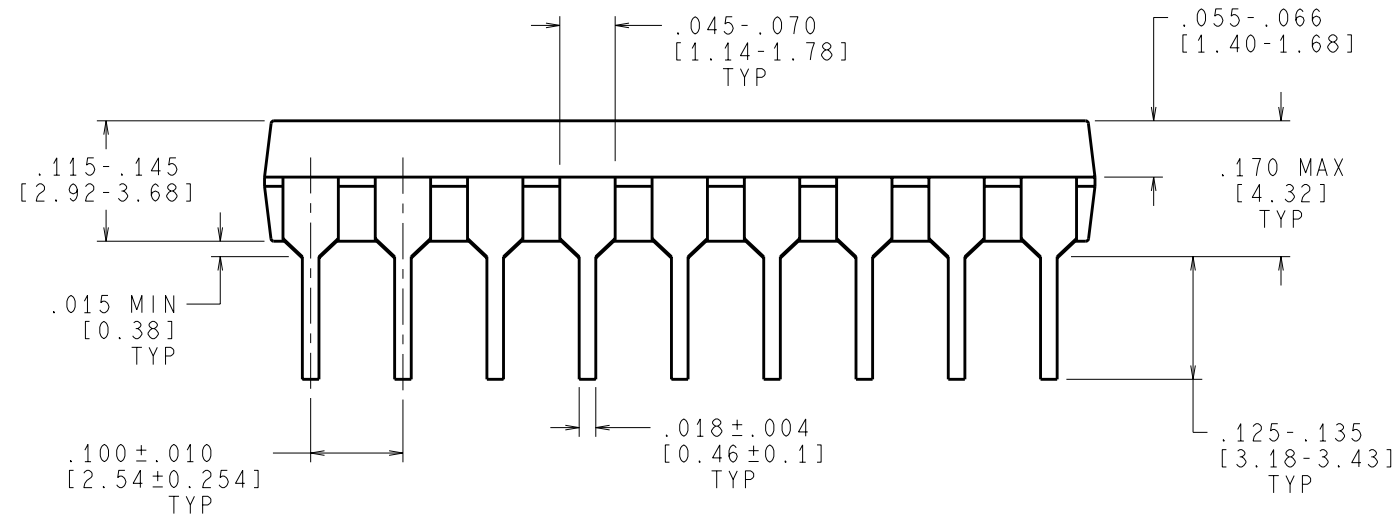
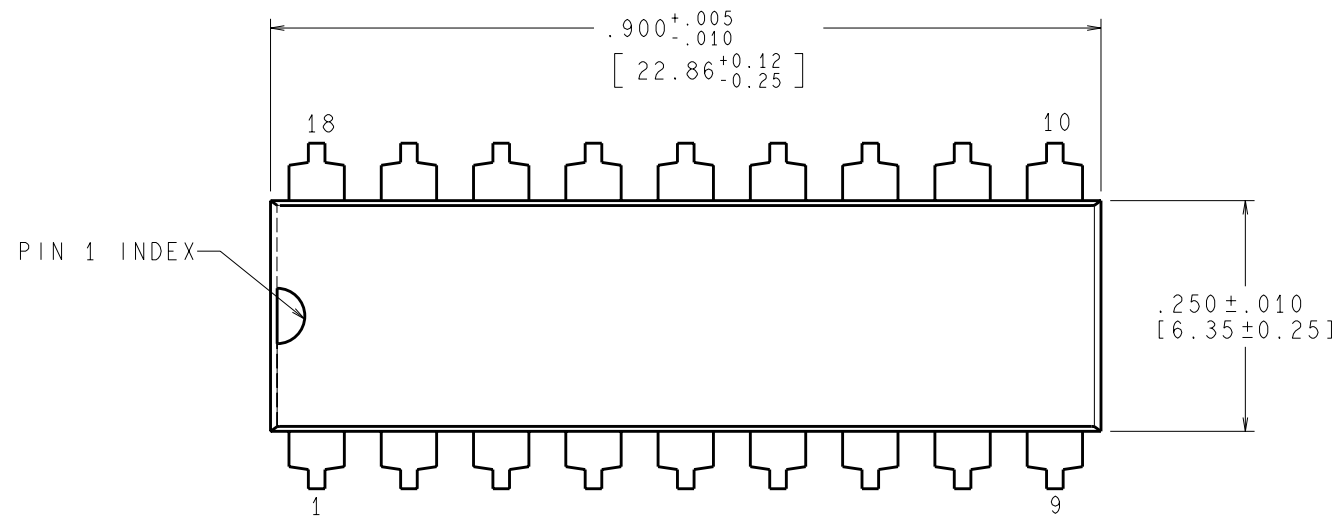


REVISIONS				
LTR	DESCRIPTION	E.C.N.	DATE	BY/APP'D
A	RELEASE TO DOCUMENT CONTROL	12337	11/15/1999	NR/TL/NS



CONTROLLING DIMENSIONS IS INCH
VALUES IN [] ARE MILLIMETERS

NOTES: UNLESS OTHERWISE SPECIFIED

- STANDARD LEAD FINISH:
200 MICROINCHES/5.08 MICROMETER MINIMUM
LEAD/TIN 37/63 OR 15/85 ON ALLOY 42 OR EQUIVALENT OR COPPER.
- REFERENCE JEDEC REGISTRATION MS-001, VARIATION AC, DATED MAY 1993.

APPROVALS	DATE	National Semiconductor			
DRAWN NOR A.R.	11/15/1999	2900 Semiconductor Dr., Santa Clara, CA 95052-8090			
DFTG. CHK. MARTA SUCHY	11/15/1999	MOLDED DIP, .250 INCH BODY WIDTH, 18 LD, .100 INCH PITCH			
ENGR. CHK. SANTHIRAN	11/15/1999				
		SCALE N/A	SIZE C	DRAWING NUMBER (SC)MKT-NA18A	REV A
		FORMERLY: N/A	SHEET 1 of 1		